



---

---

---

---

---

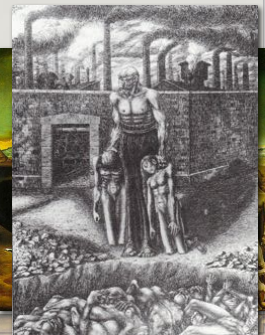
---

---

---

### "This impression of darkness"

- Pre-War Mentality:
  - civilization always progressing
- Post-War Shift in Mentality:
  - War = unimaginable carnage
  - "shellshock"
  - Post-war disillusionment
- "Modernist" sensibility
  - Literature -- Lost Generation
  - Existentialism
  - Nihilism
- "Epoch of Confusion" & the "Age of Anxiety"



---

---

---

---

---


---

---

---

### Your Mind is a CRAZY Place!

I BELIEVE I HAVE AN EXPLANATION FOR ALL OF THIS CRAZINESS.



---

---

---

---

---

---

---

---

**Your Mind is a CRAZY Place!**

Boy! That Great War was a Clustermuck, eh? Why did it happen in the first place? W.W.F.S.? (What Would Freud Say)



---

---

---

---

---

---

---

---

**Your Mind is a CRAZY Place!**

Sally was thirsty. Rather than waiting for the server to refill her glass of water, she reached across the table and drank from Mr. Smith's water glass, much to his surprise. Which part of the brain was dominant?



---

---

---

---

---

---

---

---

**Your Mind is a CRAZY Place!**

You are a five year old male, and you just asked your momma to marry you. That's not weird, right? W.W.F.S.? (What Would Freud Say)



---

---

---

---

---

---

---

---

### Your Mind is a CRAZY Place!

You are really good at playing the trumpet!  
Congratulations on being exceptionally talented,...  
or W.W.F.S.? (What Would Freud Say)



---

---

---

---

---

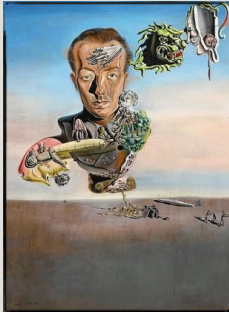
---

---

---

### Your Mind is a CRAZY Place!

You noticed that Jill always leaves her completed homework for class in her locker, and she never locks her locker. You neglected to do your work, so you thought about snagging her work to quickly get the answers, but decided against it at the last second. What part of the mind was dominant?



---

---

---

---

---

---

---

---

### Your Mind is a CRAZY Place!

You spend a lot of time staring across the room at that good-looking member of the opposite sex that you are too afraid to ask out. Then you look down and notice that you have gnawed away most of your wood pencil. W.W.F.S.? (What Would Freud Say)



---

---

---

---

---

---

---

---

### Your Mind is a CRAZY Place!

You had a specific ring tone set on your smart phone for when your EK called or texted. Now, whenever you hear that ring tone on your friends' phones, you immediately think about that dirty scoundrel and how he cheated on you, and you yell at your friends to shut off their stupid phones. W.W.F.S.? (What Would Freud Say)



---

---

---

---

---

---

---

---

### Your Mind is a CRAZY Place!

Lately you've been having problems with friends. They seem to always do better on tests, always seem to get the hot dates, and could care less about your Prom plan desires. On top of that drama, you find you are now dreaming about Pirates. WTFreud does that mean?



---

---

---

---

---

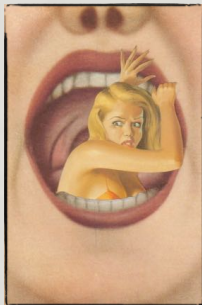
---

---

---

### Your Mind is a CRAZY Place!

You always loan your friends money to buy their fast food lunches, but they never reciprocate. Today at DQ, your friend said, "OMG, I just never have any money for lunch!" To which you sassily responded, "Why don't you just borrow money from me?" W.W.F.S.? (What would Freud say?)



---

---

---

---

---

---

---

---

### Your Mind is a CRAZY Place!

You've been struggling to juggle homework, sports, social life, online addiction, and you just learned that Yale turned you down for the fall. On top of that, you keep having recurring dreams that you have an unquenchable thirst. WTFreud does that mean?



---

---

---

---

---

---

---

---

### Your Mind is a CRAZY Place!

You had a dream involving an antelope last night. WTFreud did that mean?



---

---

---

---

---

---

---

---